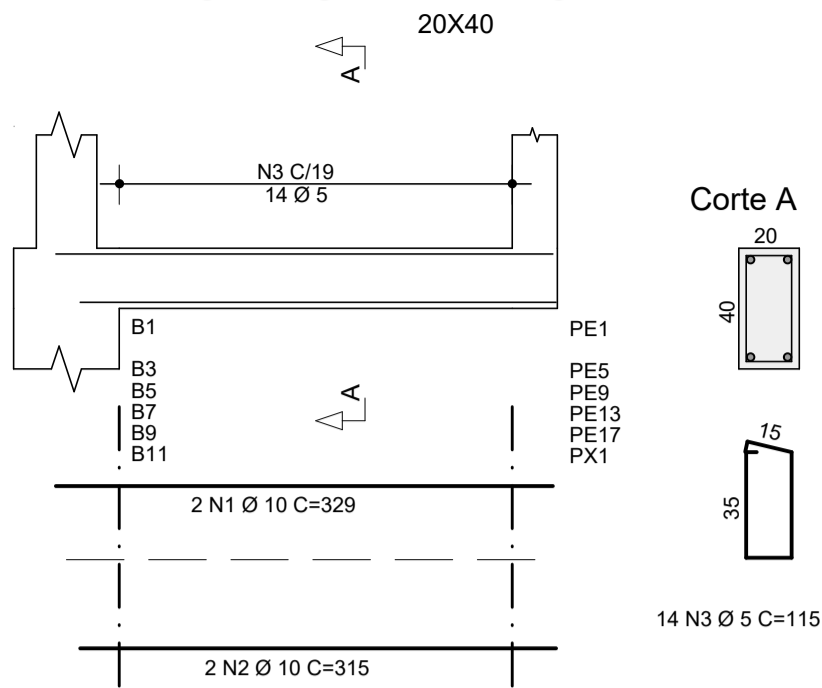
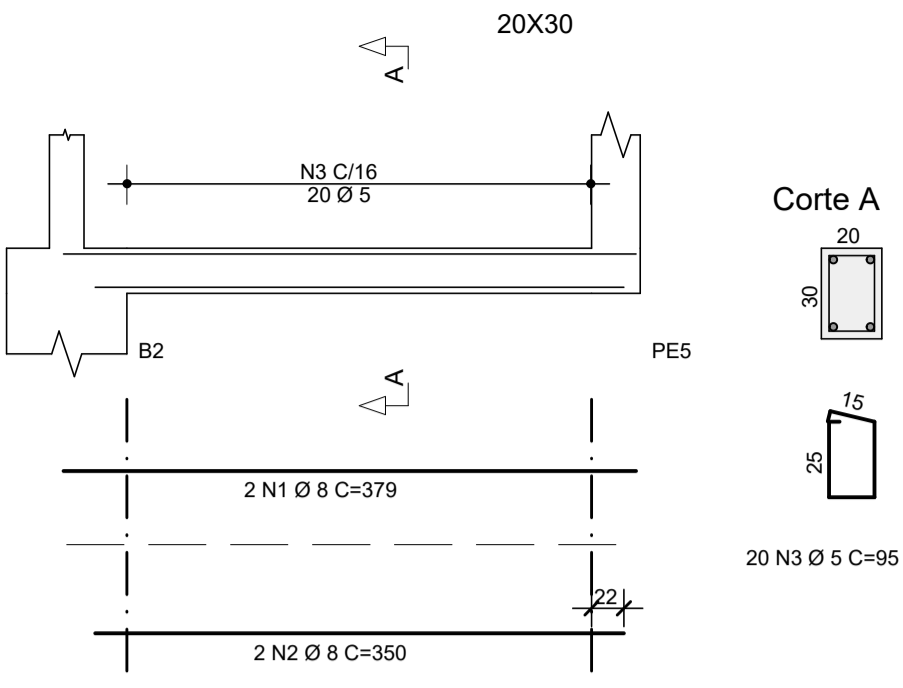


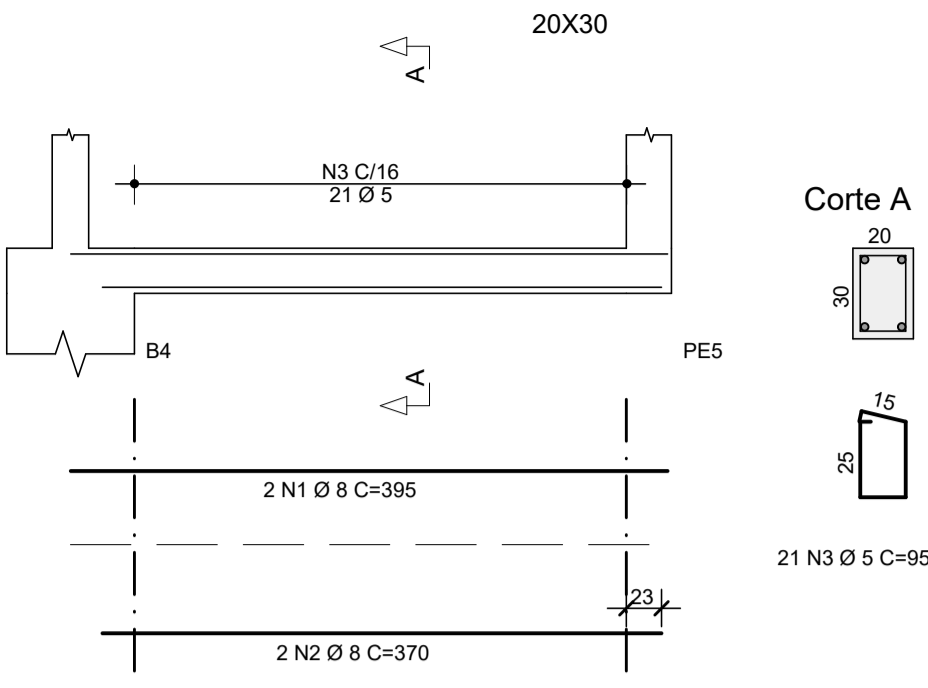
VB1=VB3=VB5=VB7=VB9=VB11



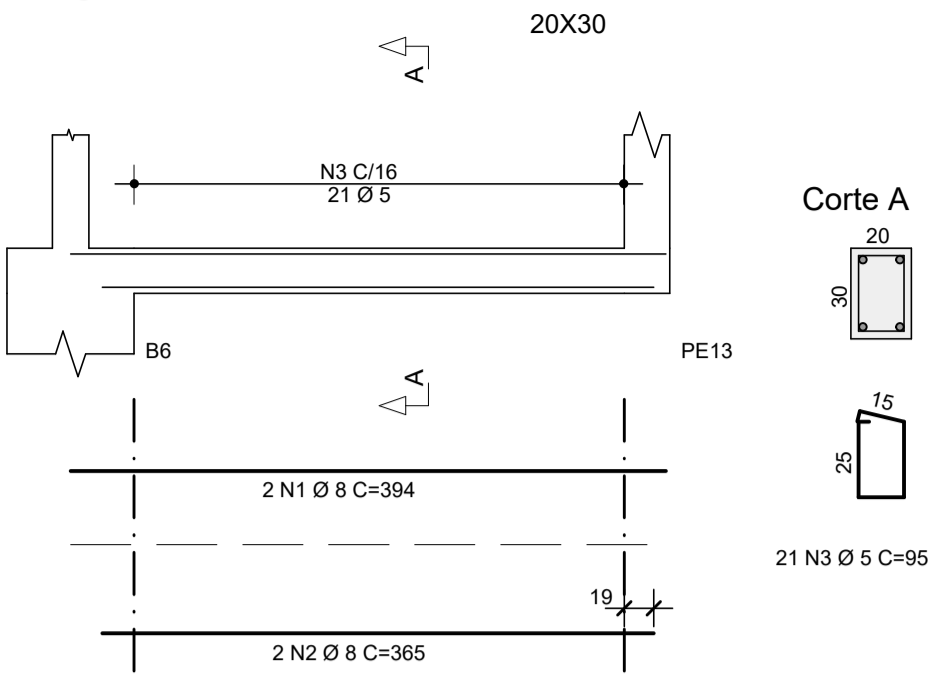
VB2



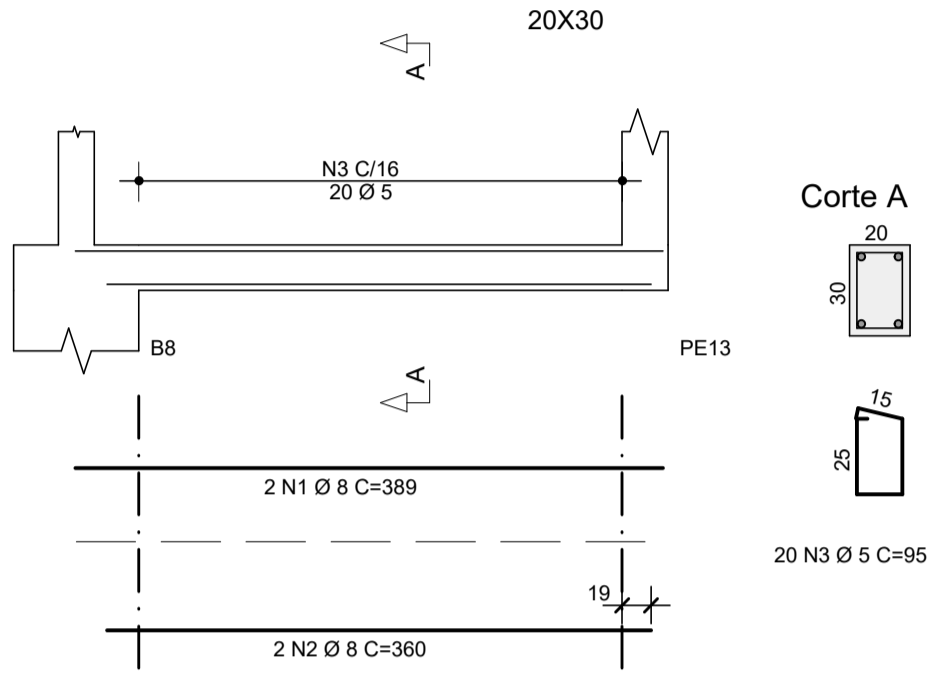
VB4



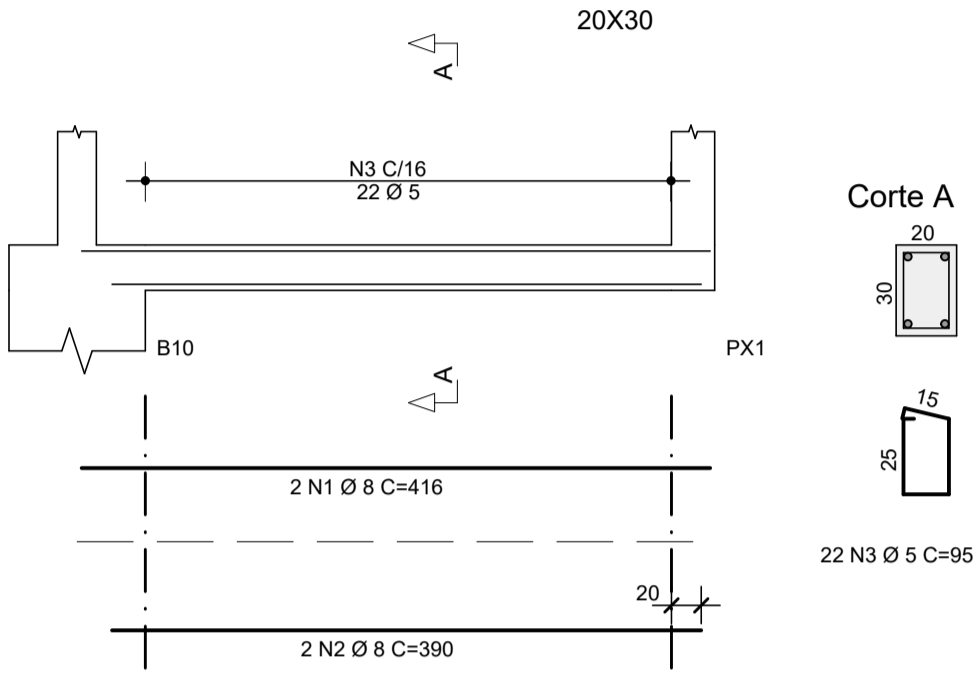
VB6



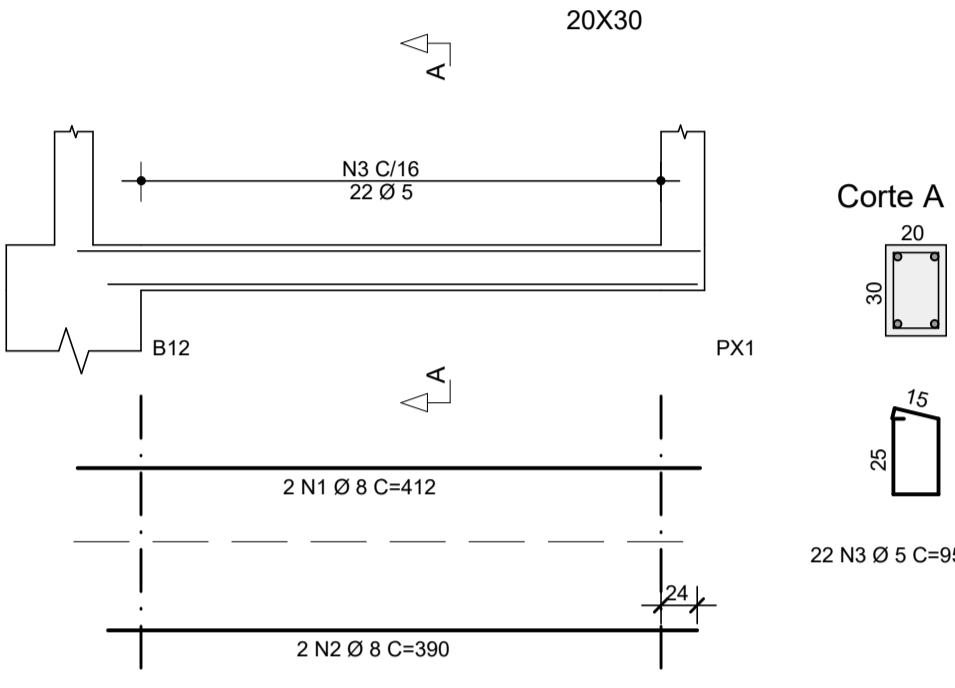
VB8



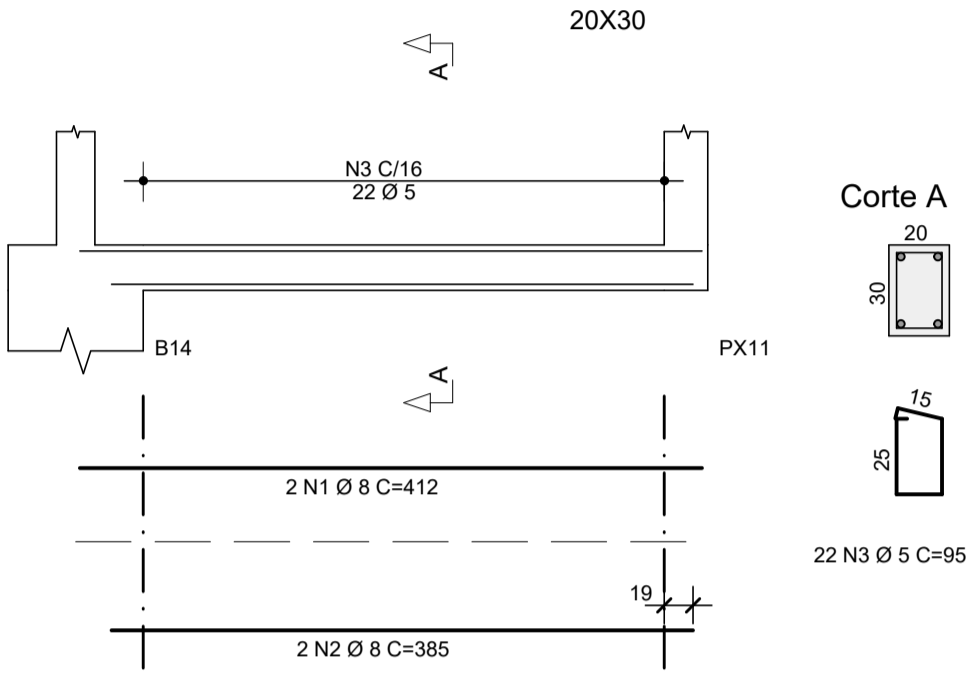
VB10



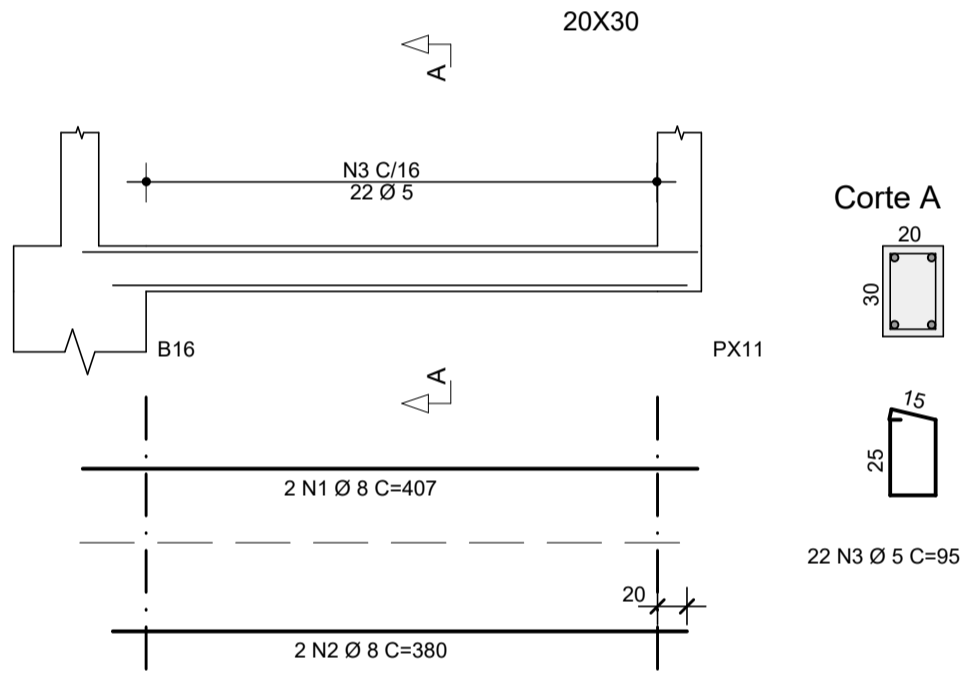
VB12



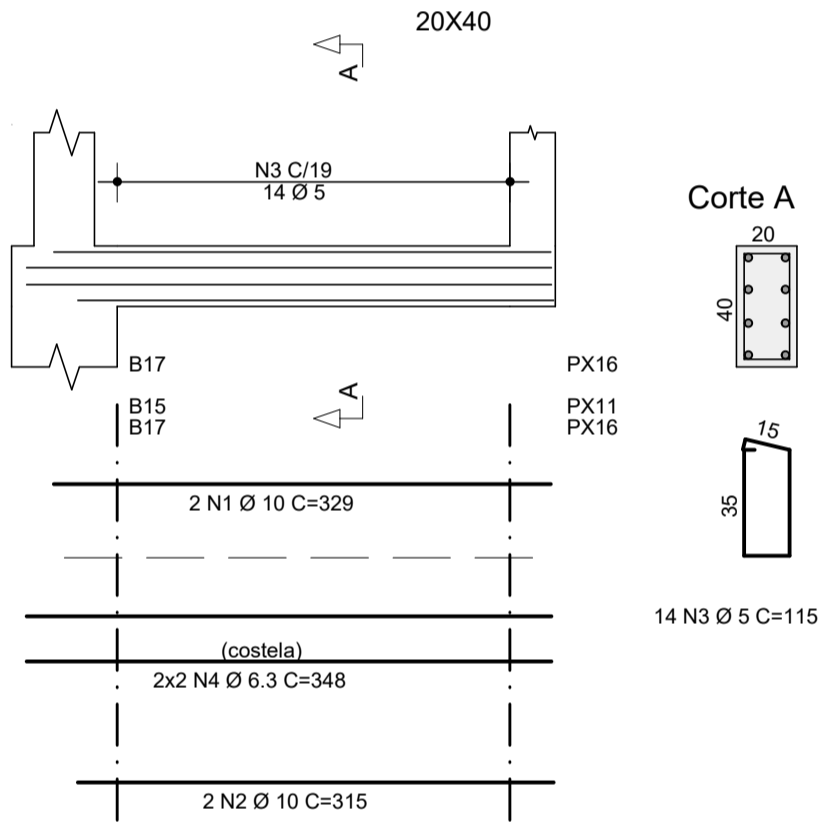
VB14



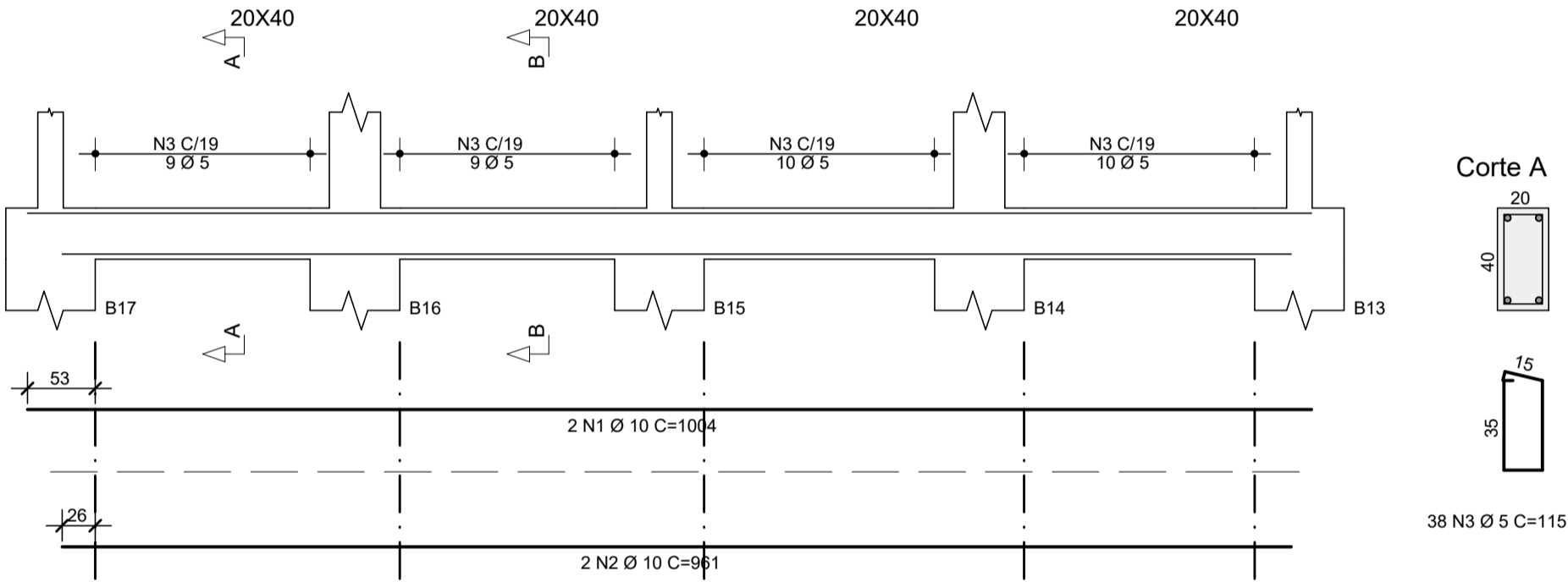
VB16



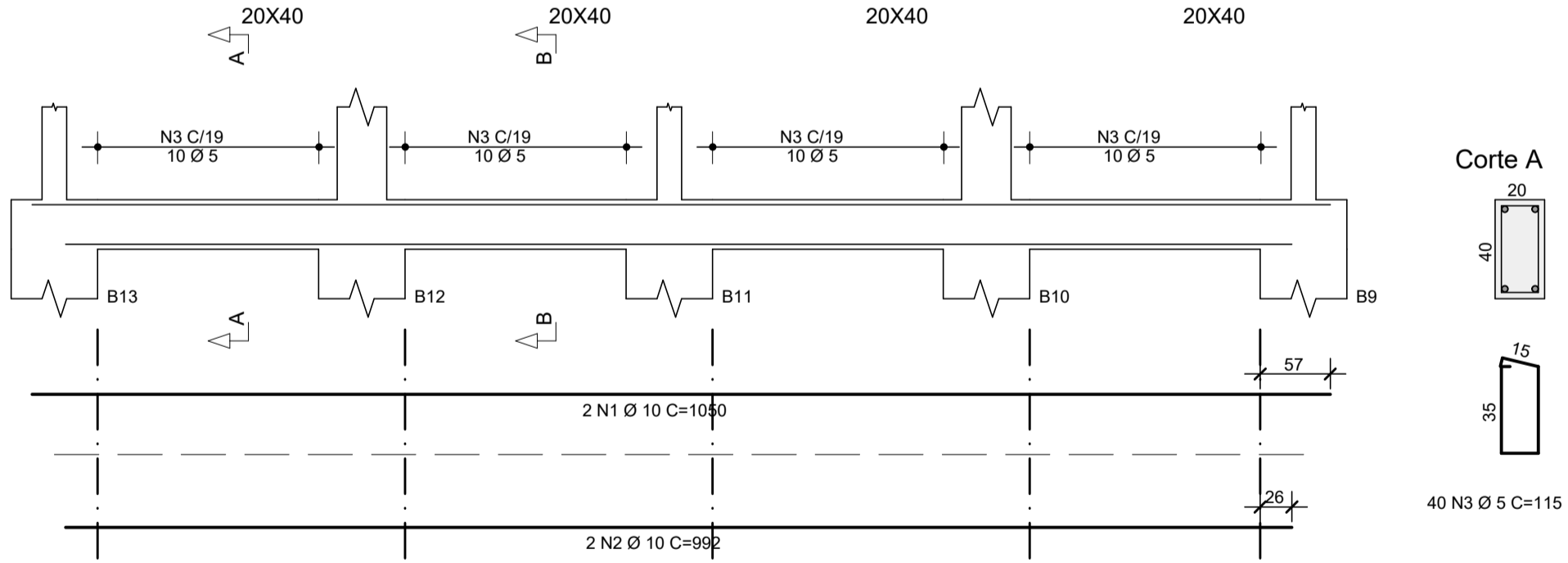
VB17=VB13=VB15



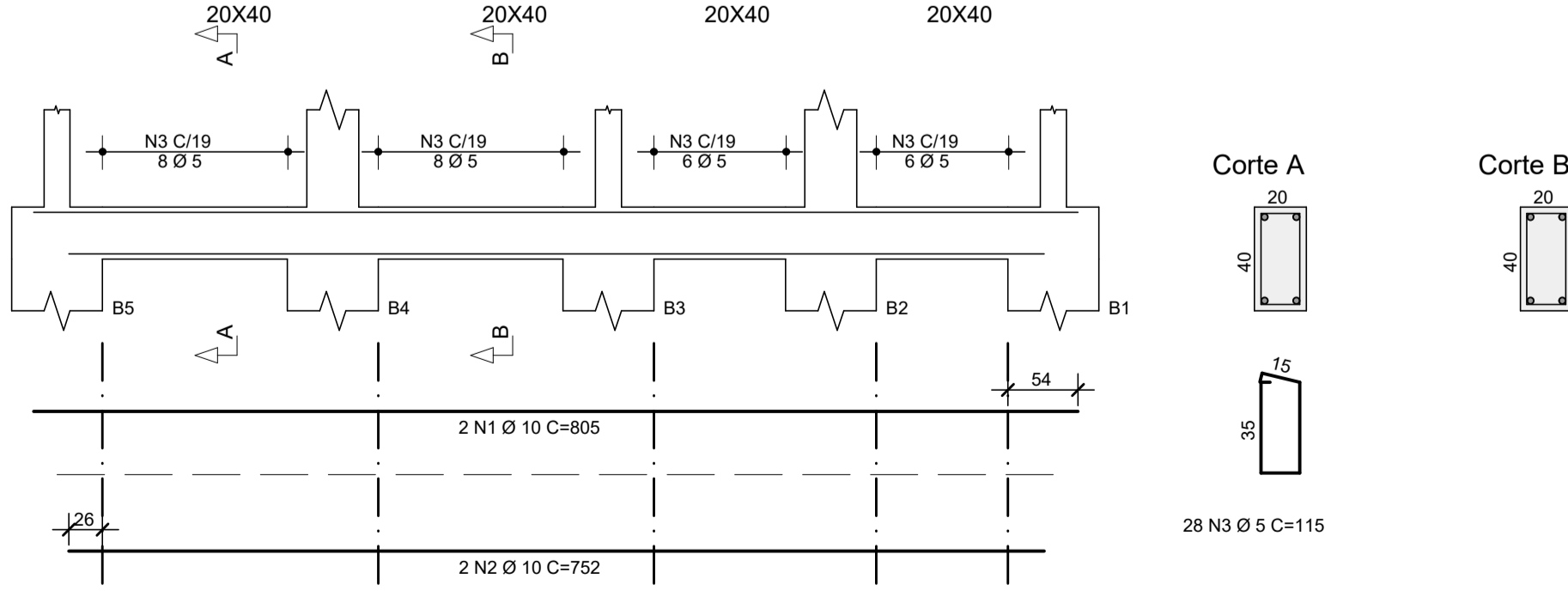
VB18



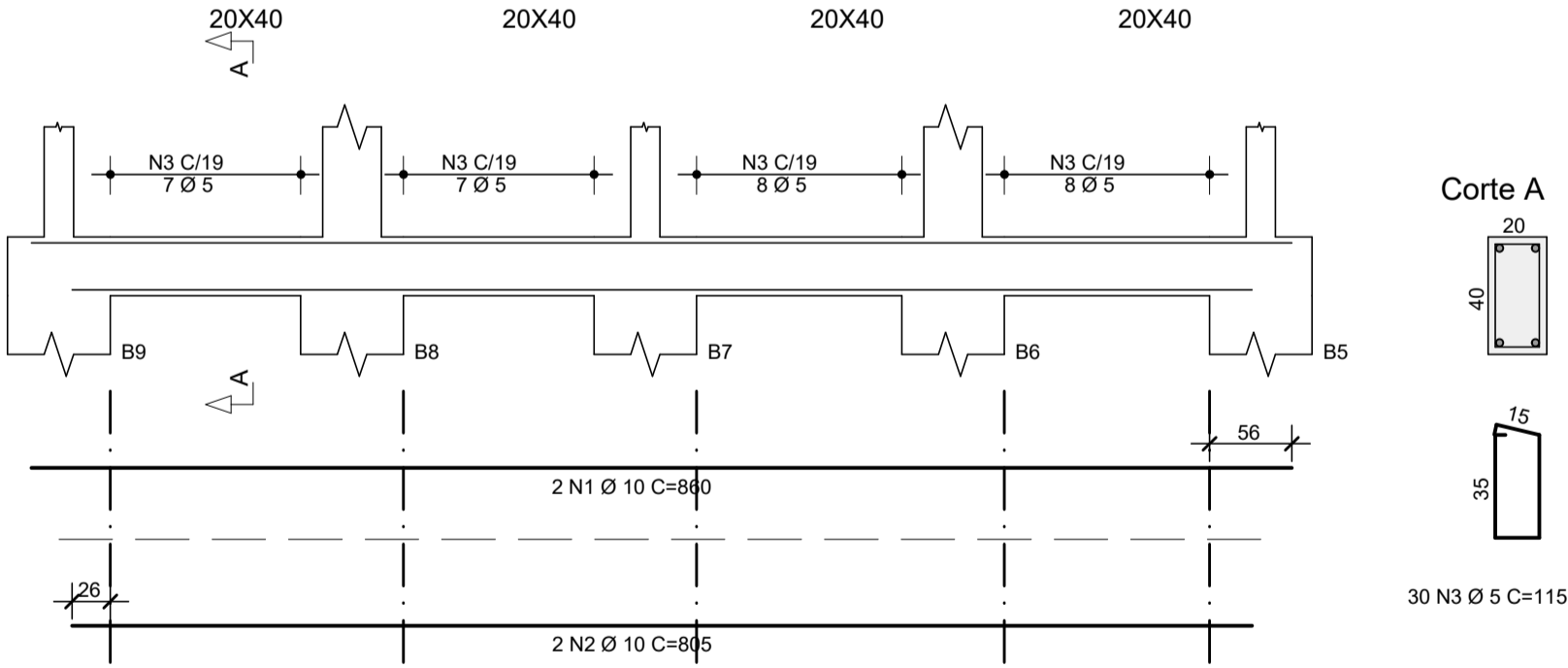
VB19



VB21



VB20



AÇO	POS	BIT	QUANT	COMPRIMENTO	
				UNIT	TOTAL
mm					
cm					
cm					
VB1=VB3=VB5=VB7=VB9=VB11 (X6)					
50	1	10	12	329	3948
50	2	10	12	315	3780
60	3	5	84	115	9660
VB2					
50	1	8	2	379	758
50	2	8	2	350	700
60	3	5	20	95	1900
VB4					
50	1	8	2	395	790
50	2	8	2	370	740
60	3	5	21	95	1995
VB6					
50	1	8	2	394	788
50	2	8	2	365	730
60	3	5	21	95	1995
VB8					
50	1	8	2	389	778
50	2	8	2	360	720
60	3	5	20	95	1900
VB10					
50	1	8	2	416	832
50	2	8	2	390	780
60	3	5	22	95	2090
VB12					
50	1	8	2	412	824
50	2	8	2	390	780
60	3	5	22	95	2090
VB14					
50	1	8	2	412	824
50	2	8	2	385	770
60	3	5	22	95	2090
VB16					
50	1	8	2	407	814
50	2	8	2	380	760
60	3	5	22	95	2090
VB17=VB13=VB15 (X3)					
50	1	10	6	329	1974
50	2	10	6	315	1890
60	3	5	42	115	4830
50	4	6.3	12	348	4176
VB18					
50	1	10	2	1004	2008
50	2	10	2	961	1922
60	3	5	38	115	4370
VB19					
50	1	10	2	1050	2100
50	2	10	2	992	1984
60	3	5	40	115	4600
VB20					
50	1	10	2	860	1720
50	2	10	2	805	1610
60	3	5	30	115	3450
VB21					
50	1	10	2	805	1610
50	2	10	2	752	1504
60	3	5	28	115	3220

RESUMO DE AÇO			
AÇO	BIT	COMPR	PESO
	mm	m	kgf
60	5	463	71
50	6.3	42	10
50	8	124	49
50	10	261	161
Peso Total 60 =			71 kgf
Peso Total 50 =			220 kgf

2			
1			
0			
Rev	Data	Autor	Assunto
PROJETO ESTRUTURAL			
<div><div><div>KDX</div><div>ARQUITETURA — ENGENHARIA</div></div><div><div>KDX Serviços de Construções e Engenharia LTDA</div><div>CNPJ: 41.465.558/0001-20</div><div>Rua Mãe dos Homens, 40A, Centro de Oliveira - MG CEP: 35.540-000</div><div>Tel: (37) 3331-5622 e-mail: kdxarquiteturaeengenharia@gmail.com</div></div></div>			
<div>Eng. Civil Daniel Firmino Diniz</div> <div>Cel: (37) 9 9107-0111 e-mail: daniel.diniz28@gmail.com</div> <div>Instagram: @eng_danieldiniz</div>			
PROPRIETÁRIO/ CONTRATANTE			
PREFEITURA DE PIRACEMA			
ENDEREÇO DA OBRA			
AV. GABRIEL PASSOS, PIRACEMA			
OBRA			
CENTRO DE ESPECIALIDADES MÉDICAS PIRACEMA			
CONTEÚDO DA FOLHA			DANIEL DINIZ CREA - 203.853/D
ARMAÇÃO VIGAS BALDRAME - VB			
VB1=VB3=VB5=VB7=VB9=VB11 / VB2 / VB4 VB6 / VB8 / VB10 / VB12 / VB14 / VB16 VB17=VB13=VB15 / VB18 / VB19 / VB20 VB21			
			ELEMENTO
			VIGAS
QUADRA	LOTE	NOME DESENHO	FOLHA
		HOS-FUN-VIG-007-R00	007
DATA	ESCALA	CONCRETO	REVISÃO
11/05/2022	1:50	25	00
		PAVIMENTO	
		Fundacao	